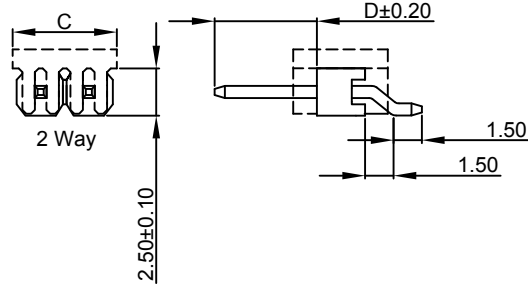
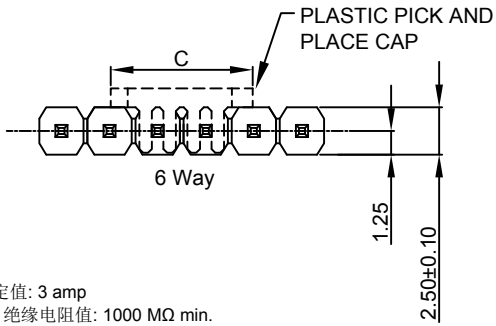
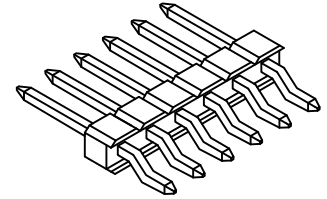


RECOMMENDED PCB LAYOUT  
General Tolerance: ±0.05

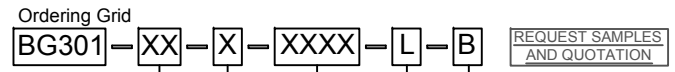


CONTACTS	DIMENSIONS		
	A	B	C
02	5.08	2.54	5.50
03	7.62	5.08	7.50
04	10.16	7.62	7.50
05	12.70	10.16	7.50
06	15.24	12.70	7.50

**SPECIFICATIONS 规格**  
 CURRENT RATING 电流额定值: 3 amp  
 INSULATION RESISTANCE 绝缘电阻值: 1000 MΩ min.  
 CONTACT RESISTANCE 接触电阻值: 20 mΩ max.  
 DIELECTRIC WITHSTANDING 耐电压: 500V AC  
 OPERATING TEMPERATURE 工作温度: -40°C TO +105°C  
 CONTACT MATERIAL 端子物料: COPPER ALLOY  
 PLATING 电镀: CONTACT AREA 接触面积: 30μ"-50μ" NICKEL UNDERPLATE, FOR PLATING SEE ORDERING GRID.  
 INSULATOR MATERIAL 绝缘体物料: POLYESTER 聚酯, LCP 30% GLASS FILLED, NATURAL, UL94V-0  
**SOLDERING PROCESS 可焊性:**  
 IR REFLOW 回流焊: 260°C for 10 sec.  
 MANUAL SOLDER 人工焊接: 350°C for 3-5 sec

**MATES WITH 配套之母座:**  
 BG300 - Horizontal mating - Choose 5.4mm header pin length  
 BG300 - 水平交配 - 选择 5.4mm 的头脚长度  
 BG306 - Perpendicular mating - Choose 4.0mm header pin length - Higher MOQ may apply  
 BG306 - 垂直交配 - 选择 5.4mm 的头脚长度 - 更高MOQ可能申请

**NOTES 备注:**  
 Standard black version BG301 is BG080  
 BG301的标准黑色塑胶版本为料号为BG080



**No. of Contacts**  
02 to 06

**Contact Plating**  
A = Gold Flash All Over  
(Other plating options available on request)

**Packing Options**  
B = Tape and Reel with Cap  
(MOQ 1,000 pcs on 5.4mm post length)  
(check with GCT for MOQ on 4.0mm post length)

**Insulator Material**  
L = LCP (Natural)

**Dimension D - Post Length**  
**0400 = 4.00mm (Standard when mating with BG306)**  
**0540 = 5.40mm (Standard when mating with BG300)**  
 or Specify Custom Post Length  
 eg 0250 = 2.50mm

By	CM	ASE	AJO
DETAIL	DRAWING RELEASE	PACKAGING UPDATE	MATING CLARIFICATION
REV DATE	A 07/12/11	B 29/06/12	C 28/08/13

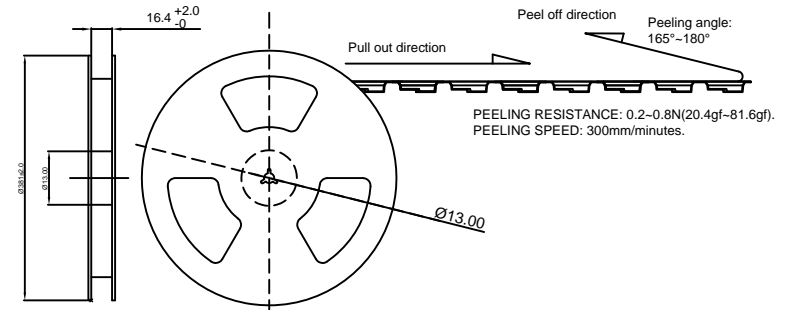
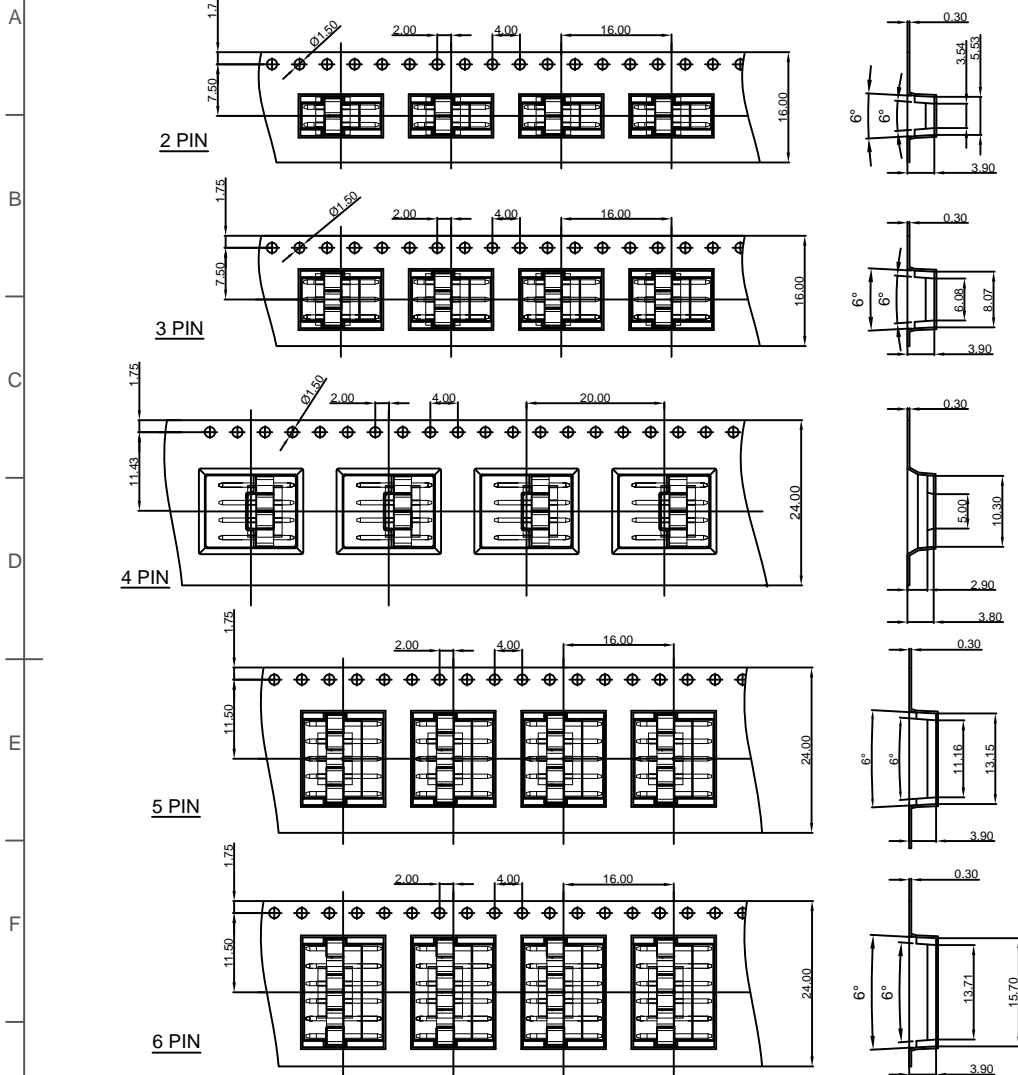


Tolerances (Except as noted)	Part Number:-	Date:-
Dimensions in mm	BG301	07 DEC 11
XX ± 0.30	Description:-	
X.XX ± 0.20	2.54mm PITCH PIN HEADER, SINGLE ROW, SMT, HORIZONTAL, W/O LOCATING PEG, NATURAL LCP	
	© THIS DRAWING IS CONFIDENTIAL AND MUST NOT BE COPIED OR DISCLOSED WITHOUT WRITTEN CONSENT	

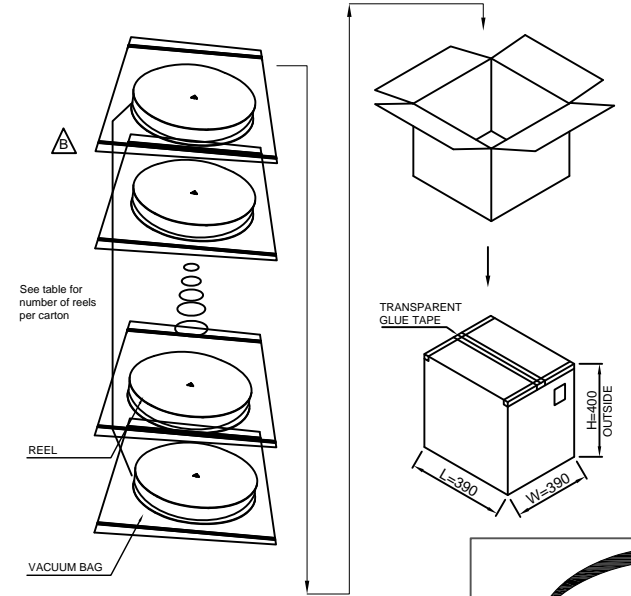
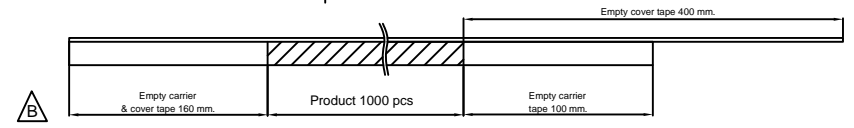
**White Lite**  
**GCT**  
www.gct.co

Scale NTS	Revision C	Material See Note	Drawn by CM	E & OE	Sheet No. 1/2
-----------	------------	-------------------	-------------	--------	---------------

FOR 5.40mm PIN LENGTH ONLY



PEELING RESISTANCE: 0.2-0.8N(20.4gf-81.6gf).  
PEELING SPEED: 300mm/minutes.



PINS	UNITS/REEL	REELS PER CARTON	CARTON	TOTAL CARRIER TAPE LENGTH
2 & 3	1000 PCS	16	16,000	16.5 m
4	1000 PCS	10	10,000	20.7 m
5 & 6	1000 PCS	10	10,000	16.5 m

By	CM	ASE	AJO
DETAIL	DRAWING RELEASE	PACKAGING UPDATE	MATING CLARIFICATION
REV DATE	A 07/12/11	B 29/06/12	C 28/08/13



Tolerances (Except as noted)	Part Number:- BG301	Date:- 07 DEC 11
Dimensions in mm	Description:-	
	2.54mm PITCH PIN HEADER, SINGLE ROW, SMT, HORIZONTAL, W/O LOCATING PEG, NATURAL LCP	
Third Angle Projection	© THIS DRAWING IS CONFIDENTIAL AND MUST NOT BE COPIED OR DISCLOSED WITHOUT WRITTEN CONSENT	

  
**White Lite**  
**GCT**  
[www.gct.co](http://www.gct.co)

Scale NTS	Revision C	Material See Note	Drawn by CM	E & OE	Sheet No. 2/2
-----------	------------	-------------------	-------------	--------	---------------